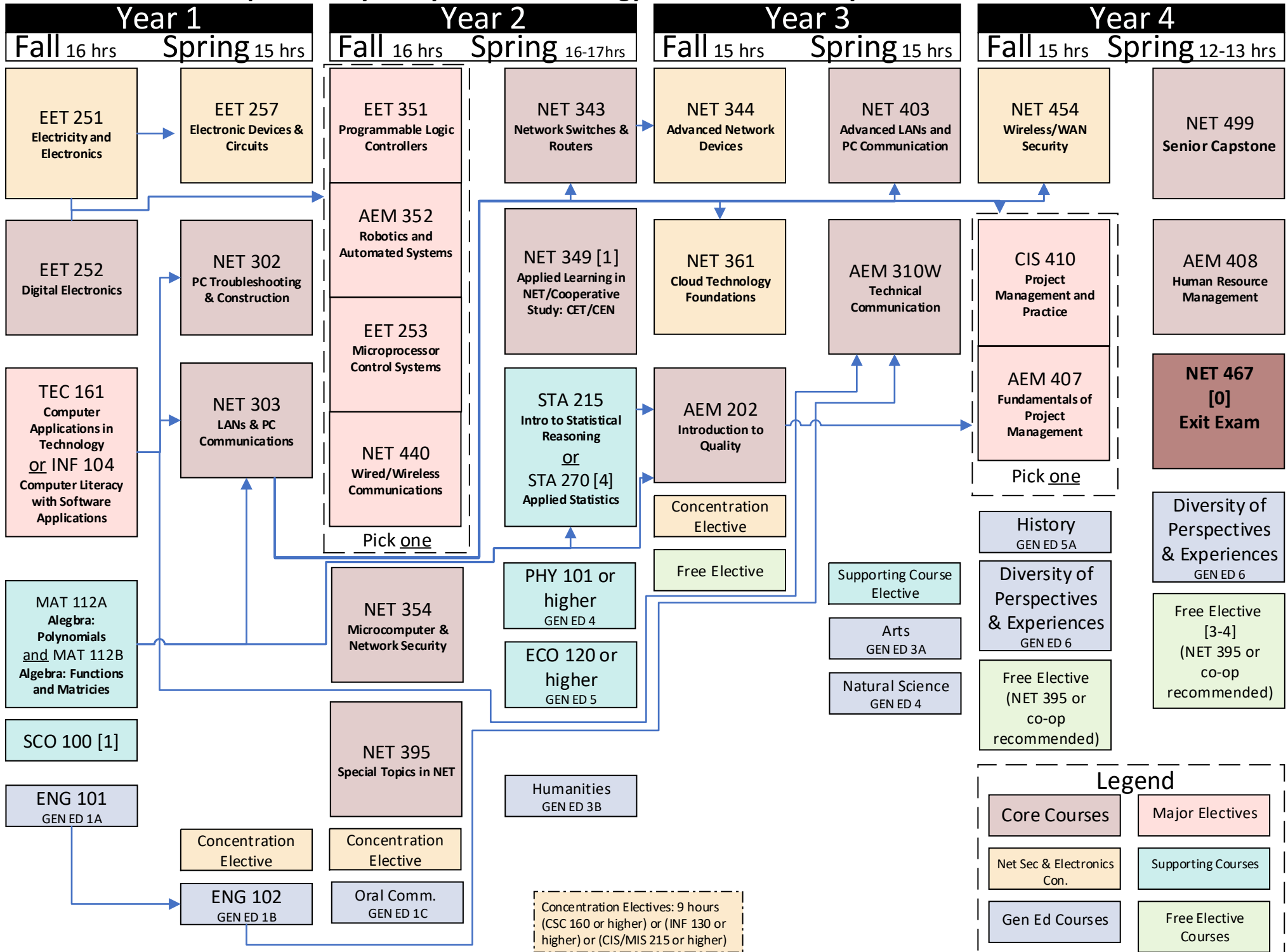


Course Map - B.S. - Cyber Systems Technology - Network Security & Electronics Concentration



Course Map - B.S. - Cyber Systems Technology - Network Security & Electronics Concentration

Major Electives	
TEC 161	CIS 410
None	Junior standing and CIS 300 or CIS 240 or NET 303
INF 104	
None	AEM 407
EET 351	AEM 202
EET 251 or EET 252	AEM 352
EET 253	EET 257; MAT 120 or higher and PHY 101
EET 251 and EET 252	
NET 440	
EET 257 and MAT 112B or higher, and PHY 101	

Core Courses	
EET 252	NET 349
Completion of math readiness indicator	Sophomore or higher standing and a GPA of 2.0+
NET 302	NET 395
TEC 161 or (INF 104 or higher) or (CSC 140 or higher)	30+ credit hours already completed, and (EET 252 or NET 303)
NET 303	NET 403
TEC 161 or (INF 104 or higher) or (CSC 140 or higher) and MAT 095 or an ACT score of 18+ or SAT score of 490+	NET 303 or CIS 375
NET 343	AEM 202
NET 303 or CIS 375	STA 215 or STA 270 and MAT 114
AEM 408	AEM 310W
None	ENG 102 or ENG 105 or HON 102, TEC 161
NET 403	NET 354
Consent of advisor, registration in NET 467 is required of all undergraduate B.S. (NET) students for the term in which they take their exit exam.	NET 303 or EET 303 or CIS 375
	NET 499
	90+ credit hours already completed, with at least 18 semester hours of NET coursework, and at least 9 semester hours of EET coursework, and AEM 310W

NET Concentration
EET 251
Math ready indicator or min. ACT math 18
EET 257
EET 251
NET 344
NET 343
NET 395
30+ credit hours already completed, and (EET 252 or NET 303)
NET 454
NET 354, and NET 303 or CIS 375

Supporting Courses
MAT 112A
Satisfaction in English, reading, and algebra indicators
MAT 112B
Satisfaction in English, reading, and algebra indicators
ECO 120
Completion of developmental math requirements
STA 215
Satisfaction in English, reading, and algebra indicators
STA 270
MAT 112A and MAT 112B, or a Math ACT score of 23+, or a Math SAT score of 560+
PHY 101
MAT 105 or higher

Supporting Courses (6-7)	Free Electives (9-10)
ECO 120 or higher, MAT112A and MAT112B or higher, PHY 101 or higher, STA 215 or 270*	Co-operative education, NET 349, recommended as free electives or NET 395 taken with a unique topic.
PLUS THREE (3) HOURS of ACC, CCT, CIS, FIN, GBU, MGT, MKT, or RMI upper division electives as approved by major advisor.	*These are course minimums, please feel free to pick higher course numbers, for example math's MAT 114 or 120